

EPAM-7500

Portable Direct-reading PM Monitor and Air Station

■ Two sampling techniques for ambient and indoor particulate matter measurement

- Sensitive IR optical light scattering for real-time measurement and graphical representation of PM profile
- 47-mm FRM-style filter holder for concurrent gravimetric sampling for cross-calibration and further PM speciation

■ Measures temperature and relative humidity

■ Optional accessories include:

- Wireless modem
- Solar panel
- External audible alarm
- Remote sampling probe
- Heating element for high-humidity areas
- Ultrasonic wind speed and direction measurement
 - Wind speed, wind direction, barometric pressure, heat index, and GPS in one lightweight sensor; no moving parts

■ Interchangeable single-jet impactors for PM10, PM2.5, PM1.0, or respirable

- Sampling inlets for PM10, PM2.5, and TSP included with instrument

■ Programmable

■ Measurements displayed simultaneously on graphical color touch screen

■ Internal 90-dB pulse alarm — user-selectable threshold

■ Long-life Li-Ion battery

■ Multiple interface for data transfer

- Removable SD card
- USB Type A and B
- Ethernet port

■ Datalogging

- Digital outputs include serial (RS-232), removable SD card, USB Types A and B, and Ethernet port
- DustComm Pro PC analysis/reporting software included

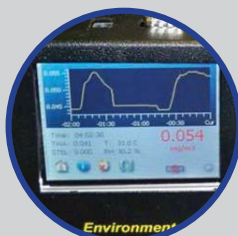
Only 7 pounds!



SKC introduces the HAZ-DUST EPAM-7500 portable monitor and air station for real-time measurements of particulate matter, temperature, and relative humidity in ambient and indoor air. Interchangeable size-selective sampling heads allow PM10, PM2.5, PM1.0, respirable, or TSP monitoring. Optional accessory for measuring ultrasonic wind speed and direction is available. A filter holder positioned directly behind the optical sensor provides concurrent gravimetric sampling for cross calibration of optical sensor, further particulate speciation, and determination of metal and carbon content.



Interchangeable impactor



Color touch screen



Optional ultrasonic wind speed and direction measurement



EPAM-7500 on optional tripod with solar panel

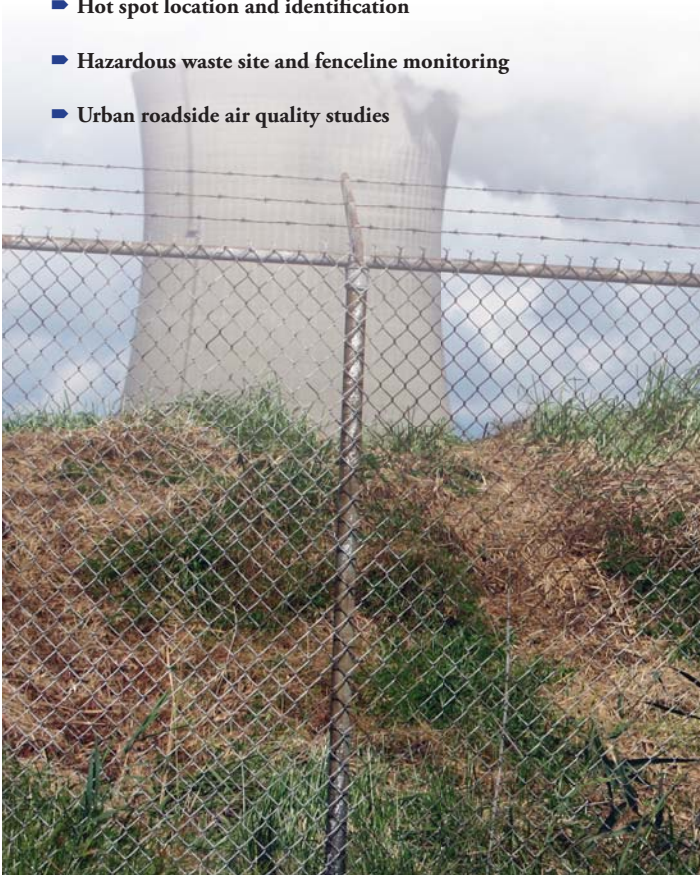
EPAM-7500

Portable Direct-reading PM Monitor and Air Station

EPAM-7500 Applications

The EPAM-7500 is compact and weighs only seven pounds for easy transport from site to site.

- Particulate indoor air quality investigations
- Evaluation of dust suppression/engineering controls
- Walk-through IAQ surveys
- Dust generation monitoring
- Quantification of particle migration
- Hot spot location and identification
- Hazardous waste site and fenceline monitoring
- Urban roadside air quality studies



EPAM-7500 is ideal for fenceline monitoring.

SKC Limited Warranty and Return Policy

SKC products are subject to the SKC Limited Warranty and Return Policy, which provides SKC's sole liability and the buyer's exclusive remedy. To view the complete SKC Limited Warranty and Return Policy, go to <http://www.skcinc.com/warranty.asp>.

Performance Profile

Sensor:	IR optical light scattering
Concentration Range:	0.001 to 400 mg/m ³
Particle Size Range:	0.1 to 100 µm
Precision:	± 0.003 mg/m ³ (3 µg/m ³)
Sampling Flow Rate:	2.0 L/min (adjustable)
Accuracy:	± 10% to filter using SAE fine test dust
Calibration:	Gravimetric reference NIST-traceable SAE fine test dust – ISO 12103-1
Filter Holder:	47 mm, FRM style
Relative Humidity Sensor Range:	5 to 100% RH
Display:	Graphical color touch screen
Alarm Output:	Internal, 90 dB at 3 ft External, 90 dB at 9 ft and visual strobe (<i>optional</i>)
Recording Time:	1 sec to 24 mo
Sampling Rate:	1 sec, 5 sec, 10 sec, 1 min, 15 min, 30 min, or 1 hr
Data Storage:	75,000 data points
Memory and Time Storage:	> 5 years
Real-time Clock and Data Display:	Hours, minutes, seconds and day, month, year
Graphical Data Display:	Concentration in mg/m ³ and TWA, MAX, MIN, STEL, date, time, temperature, and relative humidity
Digital Output:	RS-232 serial 9-pin D sub and USB; removable SD card and Ethernet port
Software:	Windows driven for graphical and data translation, requires Windows XP or 7
Power:	Rechargeable and interchangeable Li-Ion battery
Operating Time:	≥ 24 hours (Li-Ion battery), continuous (AC or solar)
Charging Time:	Approximately 5 hrs
Operating Temperature and Humidity:	14 to 122 F (-10 to 50 C), 95% non-condensing
Storage Temperature:	-4 to 158 F (-20 to 70 C)
Case Dimensions:	10 x 4 x 9 in (24.4 x 10.2 x 22.9 cm)
Weight:	7 lbs (3.2 kg)

**Contact an SKC Product Specialist
to custom order the EPAM-7500!**

